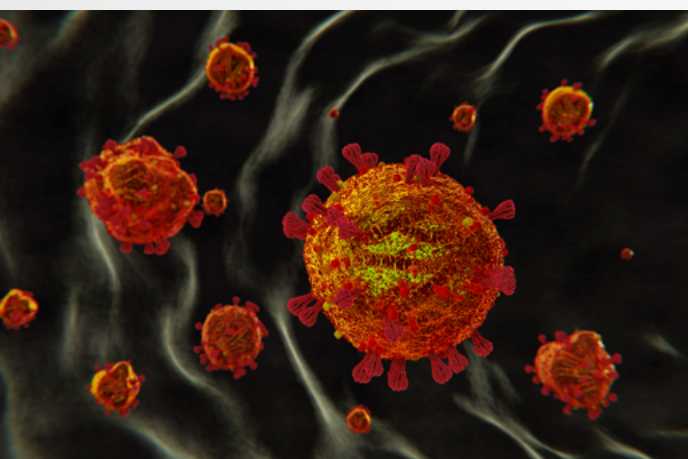




## GeneProof SARS-CoV-2 PCR Kit



### UNIQUE SPECIFICITY AND SENSITIVITY

- Excellent QCMD panel results
- Specificity for only SARS-CoV-2 confirmed, doesn't detect other common coronaviruses

### TRIPLE TARGET DETECTION

- Three independent targets in one tube
- Avoids false negative results
- Targets: RdRp gene, E gene, N gene (design recommended by WHO)



### MADE IN CZECH REPUBLIC

- Developed and manufactured in the Czech Republic, the member of EU



COMPATIBLE WITH A WIDE  
RANGE OF REAL-TIME PCR  
DEVICES

### UNIQUE INTERNAL CONTROL CONSTRUCTION

- Internal control imitates natural virus particle
- Control of the whole diagnostic process including viral nucleoproteine lysis, RNA extraction, reverse transcription and PCR amplification
- Enables full control of any non-isolation sample pretreatment

### SINGLE TUBE READY-TO-USE MASTER MIX

- Master Mix contains all components for PCR amplification
- No additional pipetting of PCR reagents necessary
- Significantly simplifies laboratory workflow



CERTIFIED  
DIAGNOSTIC TEST



# GeneProof SARS-CoV-2 PCR Kit

- + GeneProof Adenovirus PCR Kit
- + GeneProof Aspergillus PCR Kit
- + GeneProof Bordetella pertussis/parapertussis PCR Kit
- + GeneProof Enterovirus PCR Kit
- + GeneProof Flu Multiplex PCR Kit

- + GeneProof Chlamydia pneumoniae PCR Kit
- + GeneProof Legionella pneumophila PCR Kit
- + GeneProof Mycoplasma pneumoniae PCR Kit

- + GeneProof Mycobacterium tuberculosis PCR Kit
- + GeneProof SARS-CoV-2 PCR Kit
- + GeneProof SARS-CoV-2 Screening PCR Kit

TECHNOLOGY	real-time PCR
TYPE OF ANALYSIS	qualitative
TARGET SEQUENCE	specific region in <i>RdRp</i> gene, <i>E</i> gene and <i>N</i> gene
ANALYTICAL SPECIFICITY	SARS-CoV-2, 100 %
ANALYTICAL SENSITIVITY (LoD with 95% probability)	reaches up to <b>75,49 cp/ml</b> using COVID TOUCH PCR program on Qnostics SARS-CoV-2 Medium Q Control with manual extraction GeneProof PathogenFree RNA Isolation Kit (channel FAM) reaches up to <b>59,95 cp/ml</b> using COVID TOUCH PCR program on Qnostics SARS-CoV-2 Medium Q Control with manual extraction GeneProof Universal Nucleic Acid Extraction Kit (channel FAM)
EXTRACTION/INHIBITION CONTROL	PCR inhibition and RNA extraction efficiency control
VALIDATED SPECIMEN	swab, transport medium
STORAGE	-20 ± 5 °C
VALIDATED EXTRACTION METHODS	croBEE NA16 Nucleic Acid Extraction System GeneProof PathogenFree RNA Isolation Kit GeneProof Universal Nucleic Acid Extraction Kit
INSTRUMENTS	croBEE Real-Time PCR System* Applied Biosystems 7500 Real-Time PCR System AriaMx Real-Time PCR System CFX96™/ Dx Real-Time PCR Detection System LightCycler® 2.0 LineGene 9600 Plus Rotor-Gene 3000 Rotor-Gene Q SLAN® Real-Time PCR System
REQUIRED DETECTION CHANNELS	FAM, HEX, Cy5
EXTERNAL QUALITY ASSESSMENT	tested by QCMD External Quality Assessment Panels - results at <a href="http://www.geneproof.com">www.geneproof.com</a>
REGULATORY STATUS	CE IVD

\* validated instrument

PRODUCT NAME	TECHNOLOGY	ORDER NO. 100 REACTIONS
GeneProof SARS-CoV-2 PCR Kit	real-time PCR	COV2/GP/100